

KEY

-  Carmarthenshire County Council
-  Brecon Beacons National Park
-  Runoff Attenuation Features 1%
-  Wider Catchment Woodland Potential
-  Riparian Woodland Planting Potential
-  Floodplain Woodland Planting Potential

Notes
This map shows areas for woodland planting potential and runoff attenuation features. The potential attenuation features aren't shown on the Council wide overview maps. The map shows the flood risk data and information based on the map title and legend. If no data is displayed on the map, or not all features are present, this indicates that the respective flood source or features are not present within this area.



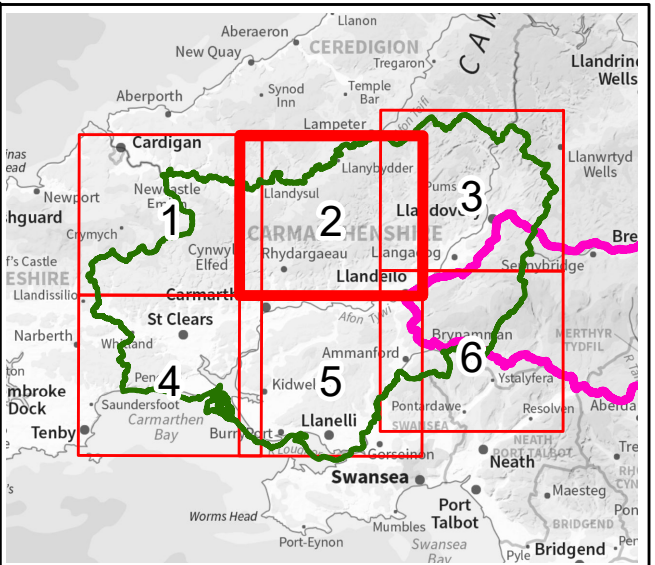
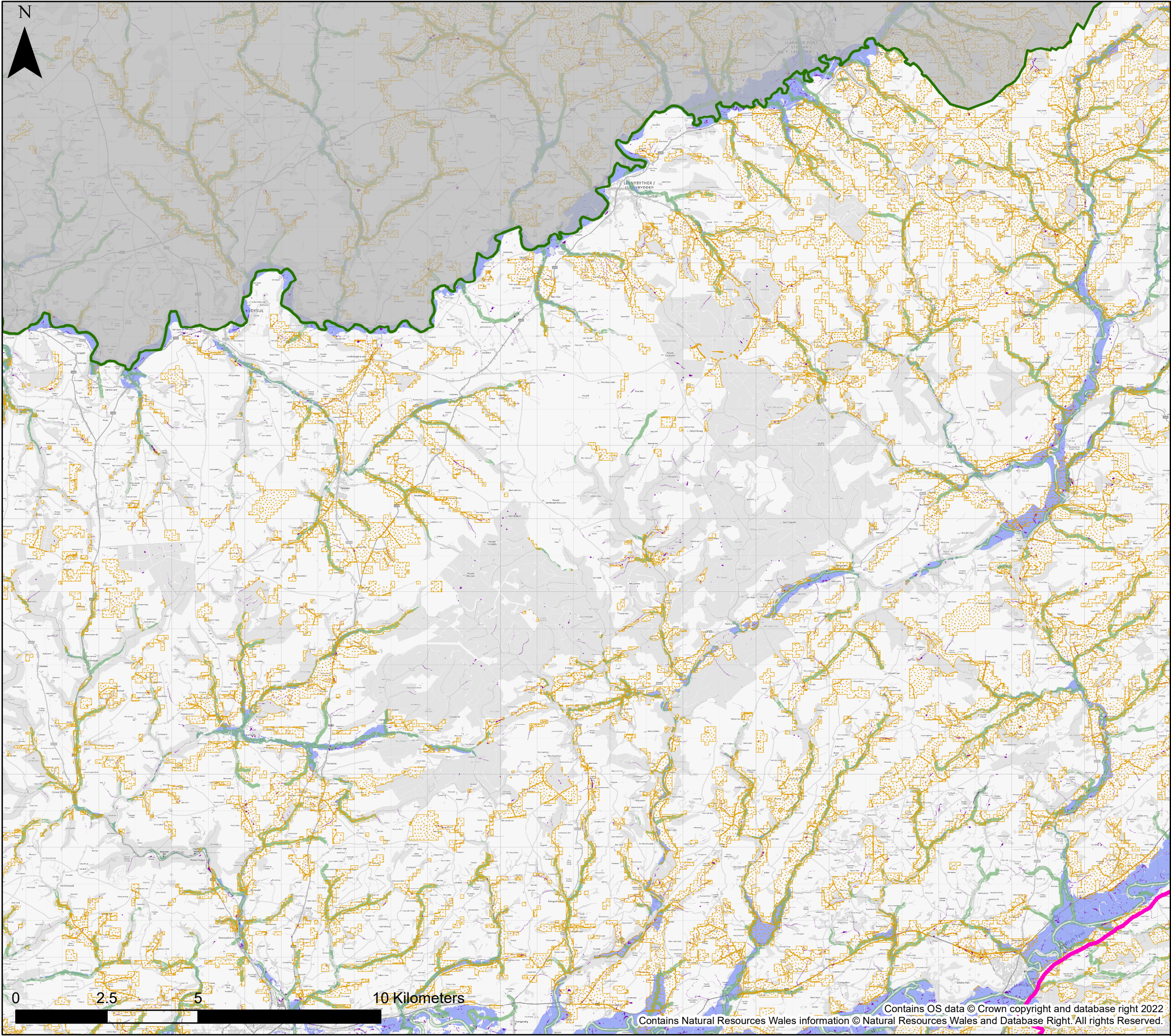
Carmarthenshire County Council

Stage 1 Strategic Flood
Consequences Assessment

*Working with Natural Processes -
Potential Mapping*

This document is the property of Jeremy Benn Associates Ltd. It shall not be reproduced in whole or in part, nor disclosed to a third party, without the permission of Jeremy Benn Associates Ltd.

| | | | |
|-------------|----------|----|------------|
| Page number | Drawn | HB | 13/06/2022 |
| 1 of 8 | Checked | PR | 14/06/2022 |
| | Approved | GB | 15/06/2022 |



KEY

-  Carmarthenshire County Council
-  Brecon Beacons National Park
-  Runoff Attenuation Features 1%
-  Wider Catchment Woodland Potential
-  Riparian Woodland Planting Potential
-  Floodplain Woodland Planting Potential

Notes
This map shows areas for woodland planting potential and runoff attenuation features. The potential attenuation features aren't shown on the Council wide overview maps. The map shows the flood risk data and information based on the map title and legend. If no data is displayed on the map, or not all features are present, this indicates that the respective flood source or features are not present within this area.



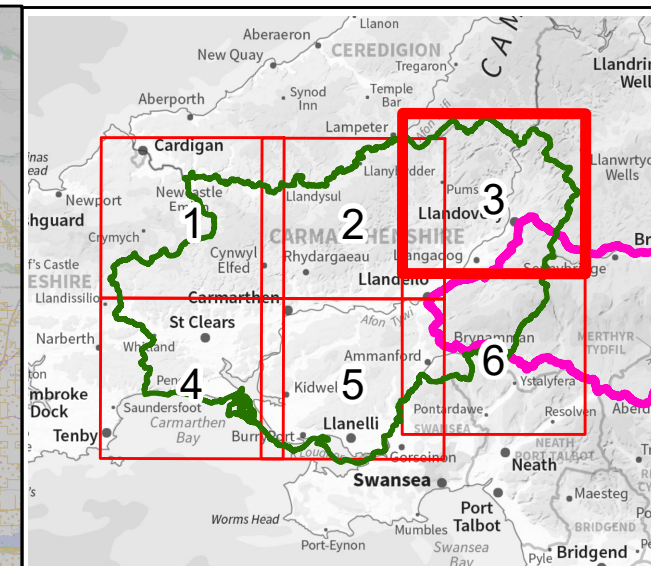
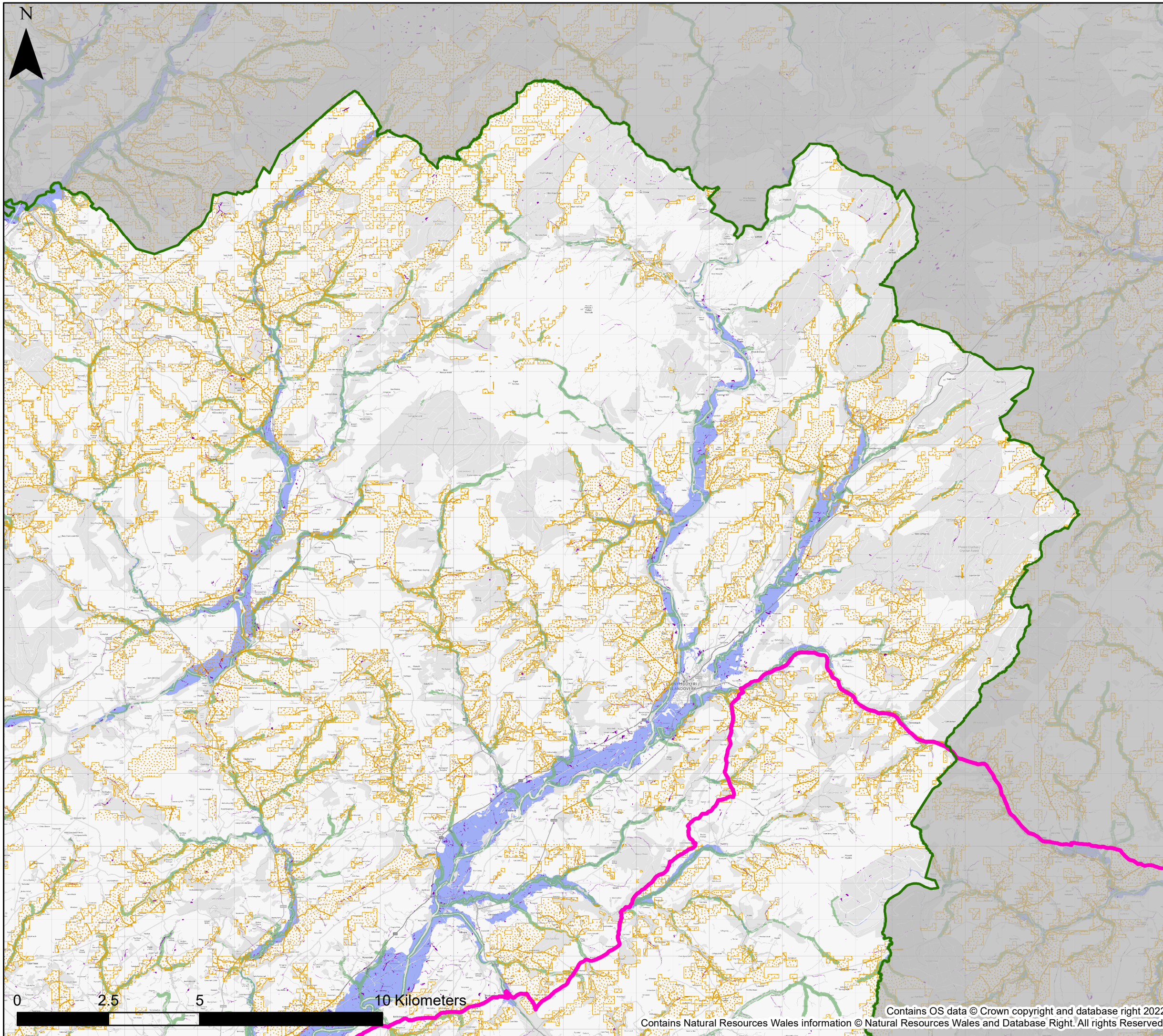
Carmarthenshire County Council

Stage 1 Strategic Flood Consequences Assessment

Working with Natural Processes - Potential Mapping

This document is the property of Jeremy Benn Associates Ltd. It shall not be reproduced in whole or in part, nor disclosed to a third party, without the permission of Jeremy Benn Associates Ltd.

| | | | |
|-------------|----------|----|------------|
| Page number | Drawn | HB | 13/06/2022 |
| 2 of 8 | Checked | PR | 14/06/2022 |
| | Approved | GB | 15/06/2022 |



KEY

- Carmarthenshire County Council
- Brecon Beacons National Park
- Runoff Attenuation Features 1%
- Wider Catchment Woodland Potential
- Riparian Woodland Planting Potential
- Floodplain Woodland Planting Potential

Notes
This map shows areas for woodland planting potential and runoff attenuation features. The potential attenuation features aren't shown on the Council wide overview maps. The map shows the flood risk data and information based on the map title and legend. If no data is displayed on the map, or not all features are present, this indicates that the respective flood source or features are not present within this area.



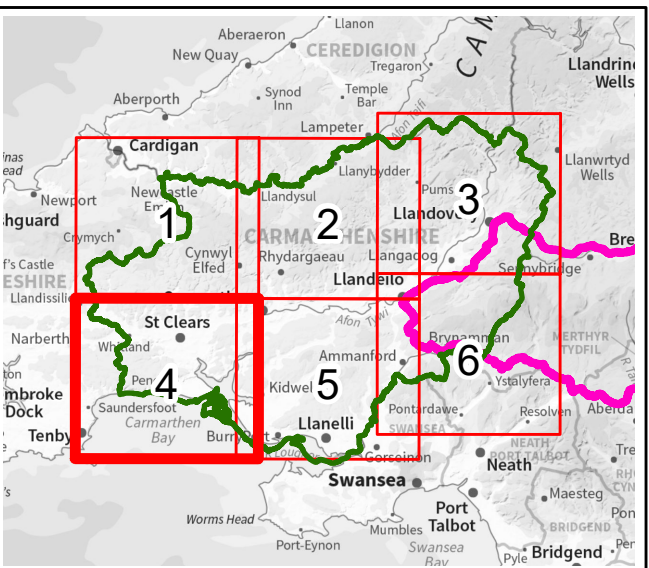
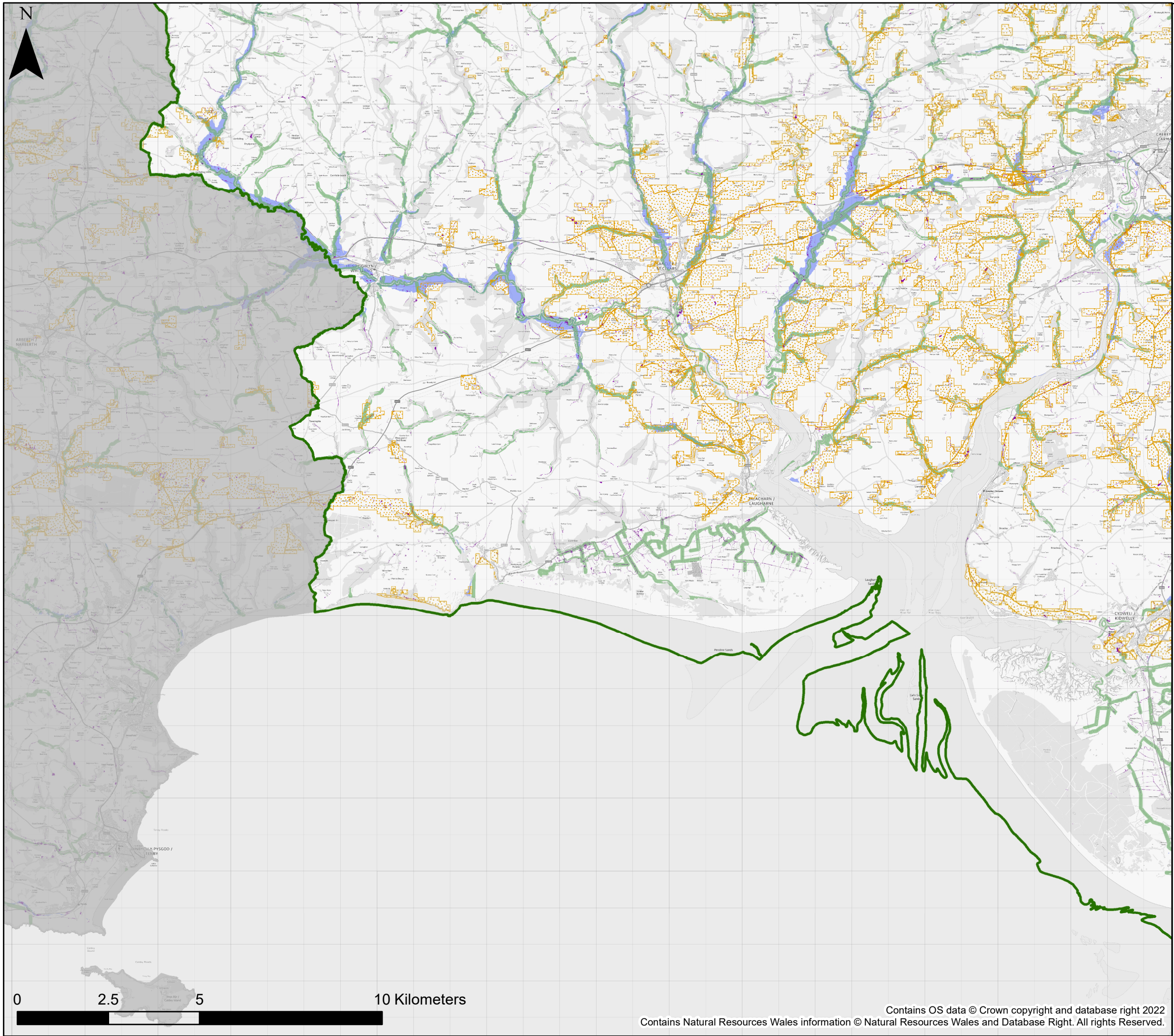
Carmarthenshire County Council

Stage 1 Strategic Flood Consequences Assessment

Working with Natural Processes - Potential Mapping

This document is the property of Jeremy Benn Associates Ltd. It shall not be reproduced in whole or in part, nor disclosed to a third party, without the permission of Jeremy Benn Associates Ltd.

| | | | |
|-------------|----------|----|------------|
| Page number | Drawn | HB | 13/06/2022 |
| 3 of 8 | Checked | PR | 14/06/2022 |
| | Approved | GB | 15/06/2022 |



KEY

-  Carmarthenshire County Council
-  Brecon Beacons National Park
-  Runoff Attenuation Features 1%
-  Wider Catchment Woodland Potential
-  Riparian Woodland Planting Potential
-  Floodplain Woodland Planting Potential

Notes
This map shows areas for woodland planting potential and runoff attenuation features. The potential attenuation features aren't shown on the Council wide overview maps. The map shows the flood risk data and information based on the map title and legend. If no data is displayed on the map, or not all features are present, this indicates that the respective flood source or features are not present within this area.



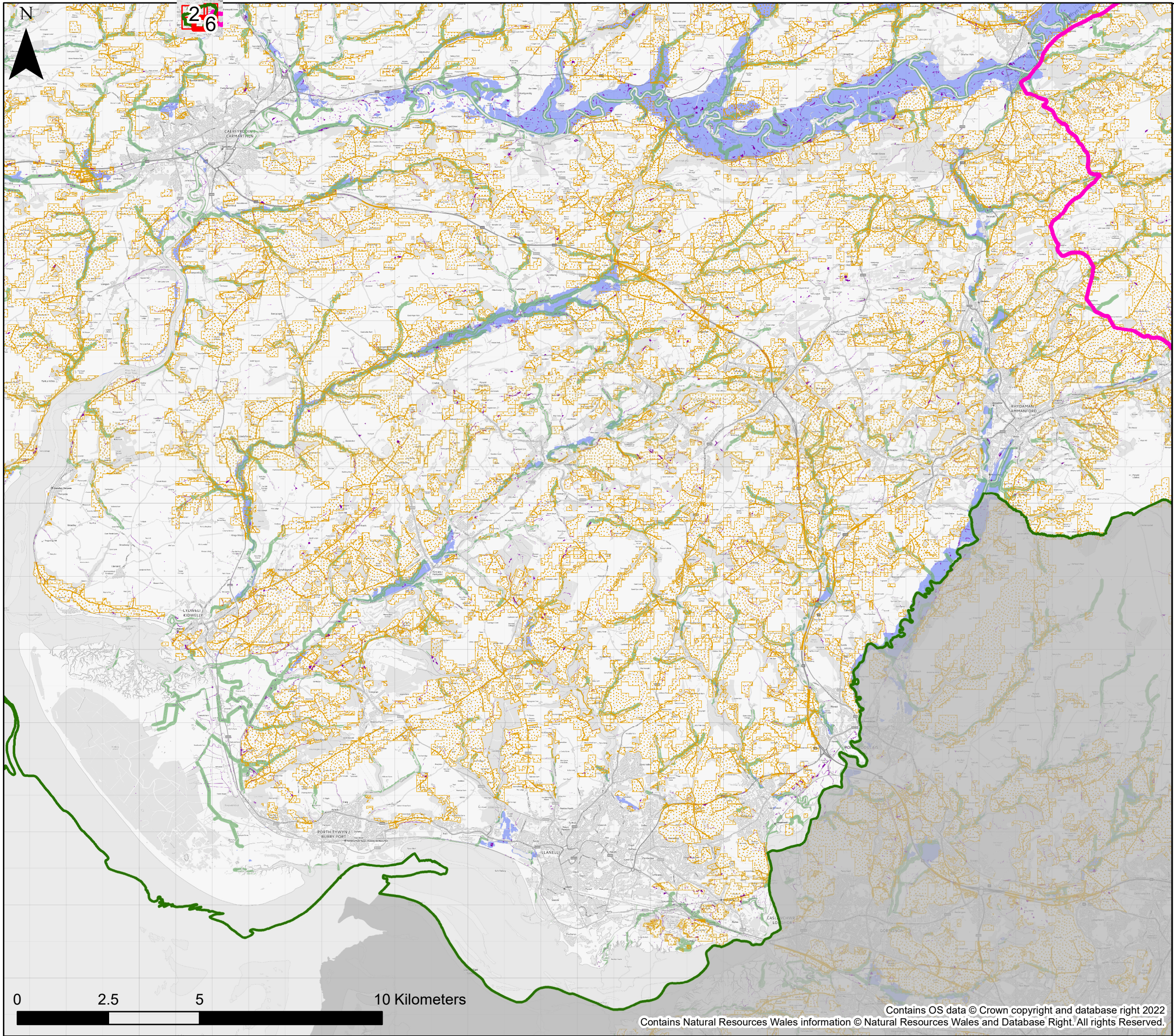
Carmarthenshire County Council

Stage 1 Strategic Flood Consequences Assessment

Working with Natural Processes - Potential Mapping

This document is the property of Jeremy Benn Associates Ltd. It shall not be reproduced in whole or in part, nor disclosed to a third party, without the permission of Jeremy Benn Associates Ltd.

| | | | |
|-----------------------|----------|----|------------|
| Page number 4 of 8 | Drawn | HB | 13/06/2022 |
| | Checked | PR | 14/06/2022 |
| | Approved | GB | 15/06/2022 |



KEY

- Carmarthenshire County Council
- Brecon Beacons National Park
- Runoff Attenuation Features 1%
- Wider Catchment Woodland Potential
- Riparian Woodland Planting Potential
- Floodplain Woodland Planting Potential

Notes
This map shows areas for woodland planting potential and runoff attenuation features. The potential attenuation features aren't shown on the Council wide overview maps. The map shows the flood risk data and information based on the map title and legend. If no data is displayed on the map, or not all features are present, this indicates that the respective flood source or features are not present within this area.



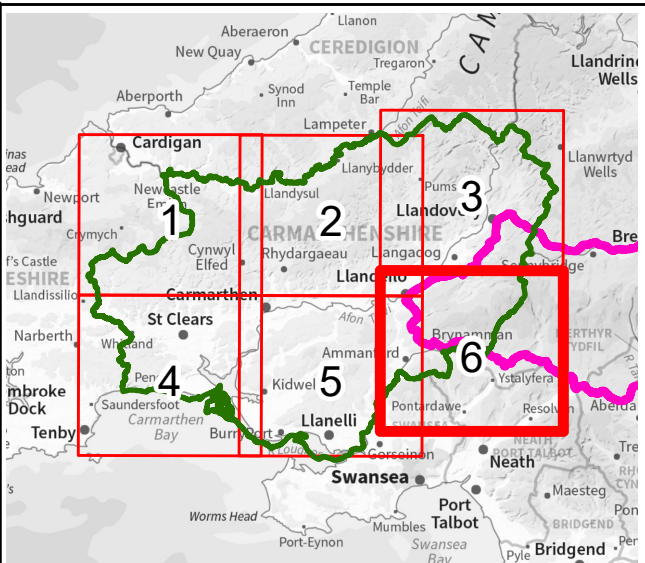
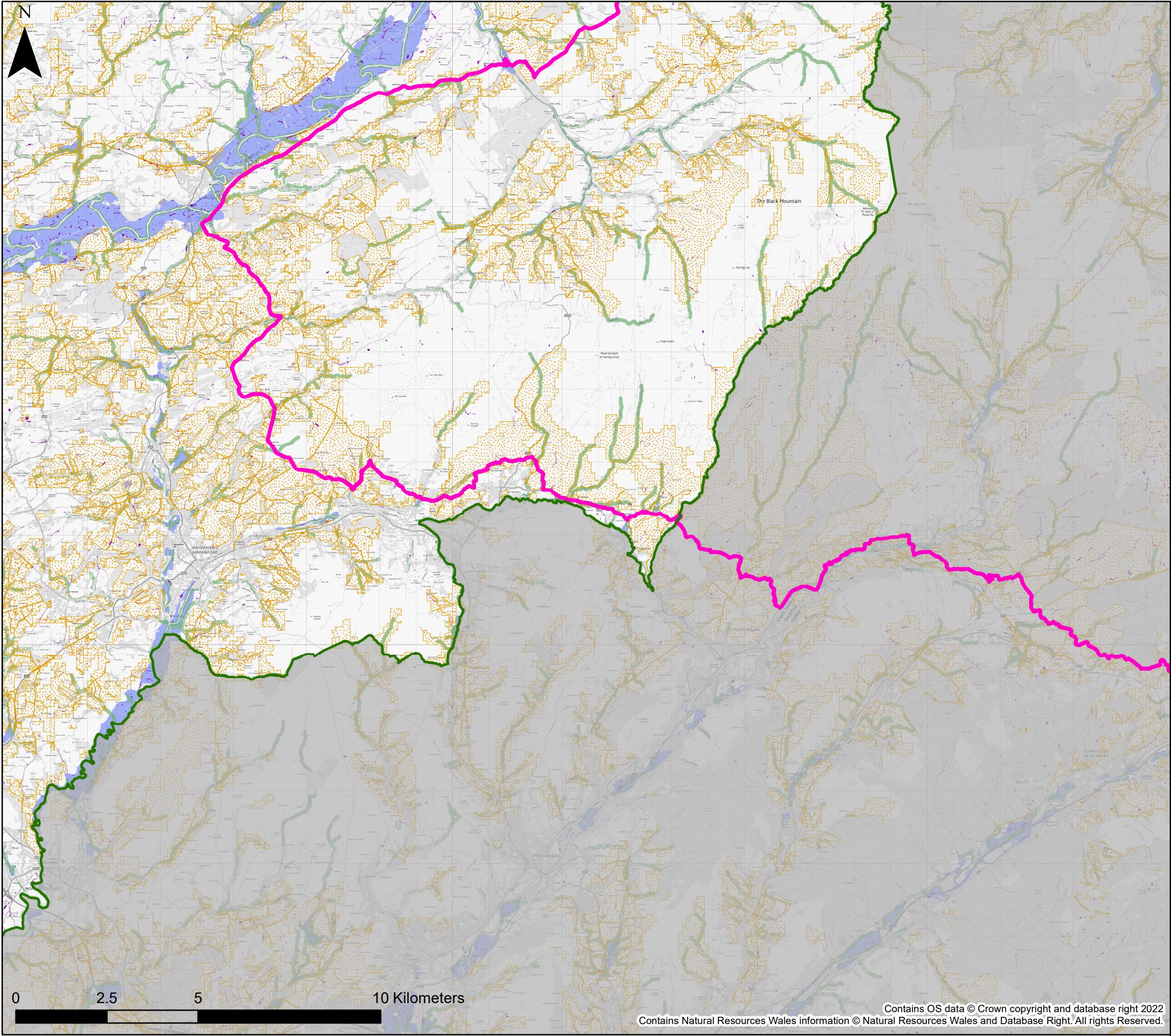
Carmarthenshire County Council

Stage 1 Strategic Flood
Consequences Assessment

*Working with Natural Processes -
Potential Mapping*

This document is the property of Jeremy Benn Associates Ltd. It shall not be reproduced in whole or in part, nor disclosed to a third party, without the permission of Jeremy Benn Associates Ltd.

| | | | |
|-------------|----------|----|------------|
| Page number | Drawn | HB | 13/06/2022 |
| 5 of 8 | Checked | PR | 14/06/2022 |
| | Approved | GB | 15/06/2022 |



KEY

-  Carmarthenshire County Council
-  Brecon Beacons National Park
-  Runoff Attenuation Features 1%
-  Wider Catchment Woodland Potential
-  Riparian Woodland Planting Potential
-  Floodplain Woodland Planting Potential

Notes
This map shows areas for woodland planting potential and runoff attenuation features. The potential attenuation features aren't shown on the Council wide overview maps. The map shows the flood risk data and information based on the map title and legend. If no data is displayed on the map, or not all features are present, this indicates that the respective flood source or features are not present within this area.



Carmarthenshire County Council

Stage 1 Strategic Flood
Consequences Assessment

*Working with Natural Processes -
Potential Mapping*

This document is the property of Jeremy Benn Associates Ltd. It shall not be reproduced in whole or in part, nor disclosed to a third party, without the permission of Jeremy Benn Associates Ltd.

| | | | |
|-------------|----------|----|------------|
| Page number | Drawn | HB | 13/06/2022 |
| 6 of 8 | Checked | PR | 14/06/2022 |
| | Approved | GB | 15/06/2022 |